



Mark permanent logo, text on any metal or plastic surface by CNC control micro-percussion stylus

- Stand alone design, no extra PC needed., Compact size, Controller separated with marking head.
- Suitable for automation installation , 110/220 volt power auto shift.
- User friendly software, use keyboard to operate it easily in the 5.7" color TFT-LCD screen included the 3<sup>rd</sup> axis rotary marking option.
- Above 400M memory space with file management function can save at least 30,000 files, USB slot for PLT drawing importing and file saving.
- With VGA port for extra monitor, RS232 and I/O for PLC or PC communication marking.
- Apply marking on mold, car part, tooling, metal industrial etc. The marking workpiece's surface hardness can go up to Max.HRC63.

TianLee Industry INC.  
 Model:MP100/b  
 S/N:MP100-06-02-1274  
 Volt:220V/60Hz  
 Power:150W/30  
 AirP:2-6 Bar Max  
 TEL:886-4-36002716  
 Made in Taiwan



# MarcoPolo MP5

## Compact Precision CNC Micro-Percussion Stylus Marking Machine (PC free)

### Specification MP5-A

Marking area	Standard-MP5: 80x40mm	MP5-110: 110x40mm 60mm	MP5-130: 130x40mm 60mm	MP5-150: 150x40mm 60mm
Marking Height	220mm Max with light stand or heavy stand 330mm Max			
Text Height	1mm above to the limit			
Text Fonts	8 standard fonts with space and width compression (Customer fonts available for option)			
Working Power	Air Pressure 2-6 bar max., electric 110/220 Volt 160W			
Marking style	Linear text with any angles, Arc or circular marking serial number, midpoint(trace), data matrix and WFont for local language marking. Option round part's index and Z axis marking.			
Marking Speed	1-4 letter/sec (3-2mm text) adjustable			
Accessories	Foot switch, 3 <sup>rd</sup> axis DRT, Name plate fixture, Name plate feeder, I/O cable, etc			
Machine Dimensions	Head with stand: 250X300X535 mm Controller: 210X250X240(LXWXH)			
Weight	Head with stand : 12 Kg, Controller:3.8Kg			



MP5-P With Option Stand



MP5-P With Option Stand



# Portable MP5-P Micro-Percussion Stylus Marking Machine

## Fine marking quality increase the quality image of the products



TYPE MP5-S(Special)

- ◆ Portable marking head can move to any place suitable to the big parts that can not move, like steel tube, plate, casting parts, mold and machine etc.
- ◆ Controller separated to portable head with standard 3 meter cable.
- ◆ No extra PC needed, use keyboard work in the 5.7" color TFT-LCD screen with user friendly software.
- ◆ With USB, RS232 and I/O ports in the controller for the communication marking.
- ◆ 400M above memory for at least 30,000 marking files.
- ◆ Can mark serial number, text, date, circle and option R-axis rotary marking. Option heavy rotary can stand 800 kg workpiece max.

Portable micro-percussion marking machine using air pin to punch the micro-dots text, logo or number in the workpieces. Using keyboard key in the content you want to mark in the LCD screen, the machine will do the job at very fast and precision way. The marking depth and speed can be adjusted and the machine is portable to any parts that you want to mark.

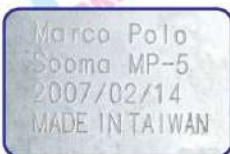


TYPE MP5-P (Standard)

### Specification MP5-P

Marking area	MP5-P: 80×40 mm	MP5-P110: 110×40 mm	MP5-P130: 130×40 mm	MP5-P150: 150×40 mm
Text Height	1mm above to the limit			
Text Fonts	8 standard fonts with space and width compression (Customer fonts available for option)			
Working Power	Air Pressure 2-6 bar max., electric 110/220 Volt 265 W			
Marking style	Linear text with any angles, Arc or circular marking serial number, midpoint(trace), data matrix and WFont for local language marking. Option round part's index and Z axis marking.			
Marking Speed	1-4 letter/sec (3-2mm text) adjustable			
Accessories	Foot switch, 3 <sup>rd</sup> axis DRT, Name plate fixture, Name plate feeder, I/O cable, etc			
Machine Dimensions	Portable Head: 290X280X180 mm (include handle) Controller: 210X250X240(LXWXH)			
Weight	Head: 3.2Kg, Controller: 3.8Kg			

### Making sample



**TU** TianLee Industrial INC.  
MARKING

5F~3, No.210, 38th Road, Taichung Industrial Park,  
Taichung, Taiwan (R.O.C.)

TEL:886-4-36002716 FAX:886-4-23503100

E-mail:yufen@tlimarking.com.tw  
http://www.tlimarking.com  
http://www.soonmark.com

Distributor