

NEW!

Compact Air Cooling Diode, End Pump

Marco

YAG/YV04 Laser Marking Machine

Patent Pending



Marco-SMF Series Diode Laser Head

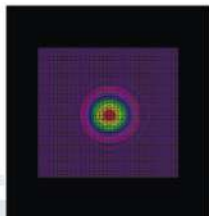
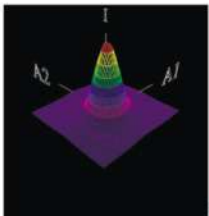


Marco-SMF Series Laser Controller Box

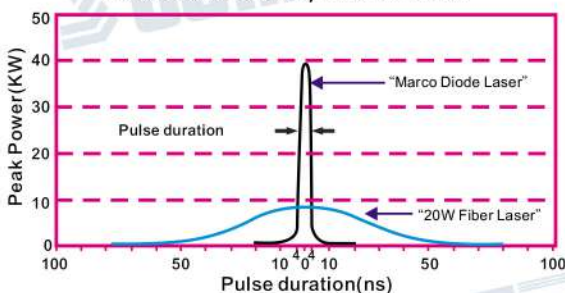


Marco-SMF Series Standard Working Table

- New Diode Pack from end pump technology with patent module design to make a compact, small and economic Laser marking machine in the world.
- Marco-SMF series diode Laser marking machine can mark many different parts with different result. Its 8ns narrow pulse width make the peak power going to max. 40KW suitable for cold marking.
- We optimize the best diode source module with gavor scanner control module, embedded IPC with Marco 5.1 Laser software to one small pullable pack like a battery pack for easy maintenance and put inside a stable power module rack to make it becomes smallest portable Laser marking controller box in the world.
- Every diode pump pack pass serious quality test with beam quality, power stability and at least 100 hours life test, therefore, the total life with same marking quality can reach at least 10,000 hours, some application even careach to 20,000 hours but our standard warrantee is 1 year.
- Marco SMF series diode Laser with compact size and module design can easy separate head and controller rack, It also has connection plug show status of this Laser and working indicators to show the status of the operation for easy maintenance.
- It don't need extra PC, the 10.4" LCD with embedded IPC and Marco 5.1 marking software included in the controller box. Just connect keyboard, mouse it can start to mark. It has only one single input power and switch, no need other extra wiring or cable to make it very tidy and easy operation.



Real Beam Quality less than 1.3



Laser Peak Power for different laser source "Marco Diode Laser" vs "20W Fiber Laser"

Simple and module design
 Laser head with controller box
 integrated Marco 5.1 Laser control
 software with embedded IPC and
 10.4" LCD monitor to make it easy
 operation. It works for marking different objects.

with high resolution, high peak power, narrow pulse width for avoiding the damage of the marking surface. It's small and compact size suitable to put in any table for office, laboratory or small business and factory.



Type/Specification	SMF-6W
Av. Power	6W± 0.5W
Wavelength	1064 ±1nm
Beam Quality & Modulation	M ² < 1.3 20KHz(Fixed)
Pulse Width	8ns(@20KHz)
Pulse Energy / Peak Power	Max.40KW(@20KHz)
Beam Size	0.04-0.06 mm dia.(Standard F163 focus len, 110X110 mm marking area)
Aiming Beam	3mW@635nm with red diode light indicate marking position
Main Power Supply	Single phase 110-230VAC/50/60Hz
Power Consumption	< 500W
Embedded PC.	Windows7 OS, 64G Memory, Marco 5.1 Operation Software
Operating Temp.	+0~+35C
Heat Exchange	Air to Air
Control Rack Dimension & Weight	LXWXH=334X219X245mm weight 8.5Kg
Laser Head Dimension &Weight	LXWXH=460X100X100mm weight 4Kg
Focus Len Size and Marking Area	F100,0.03mm(STD), 70x70 mm ,Basic Supply Len F163,0.05mm(STD),110x110mm, F254,0.07mm(STD),175x175 mm

Application



Mobile phone indicator



Picture on gift marking



Plastic indicator



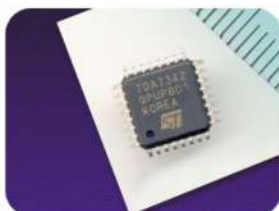
Stainless & alloy steel



CF card & soft PC board



Titanium alloy & aerospace part



Semiconductor & IC chip



Ruler & medical instrument



Ceramic & electrical component